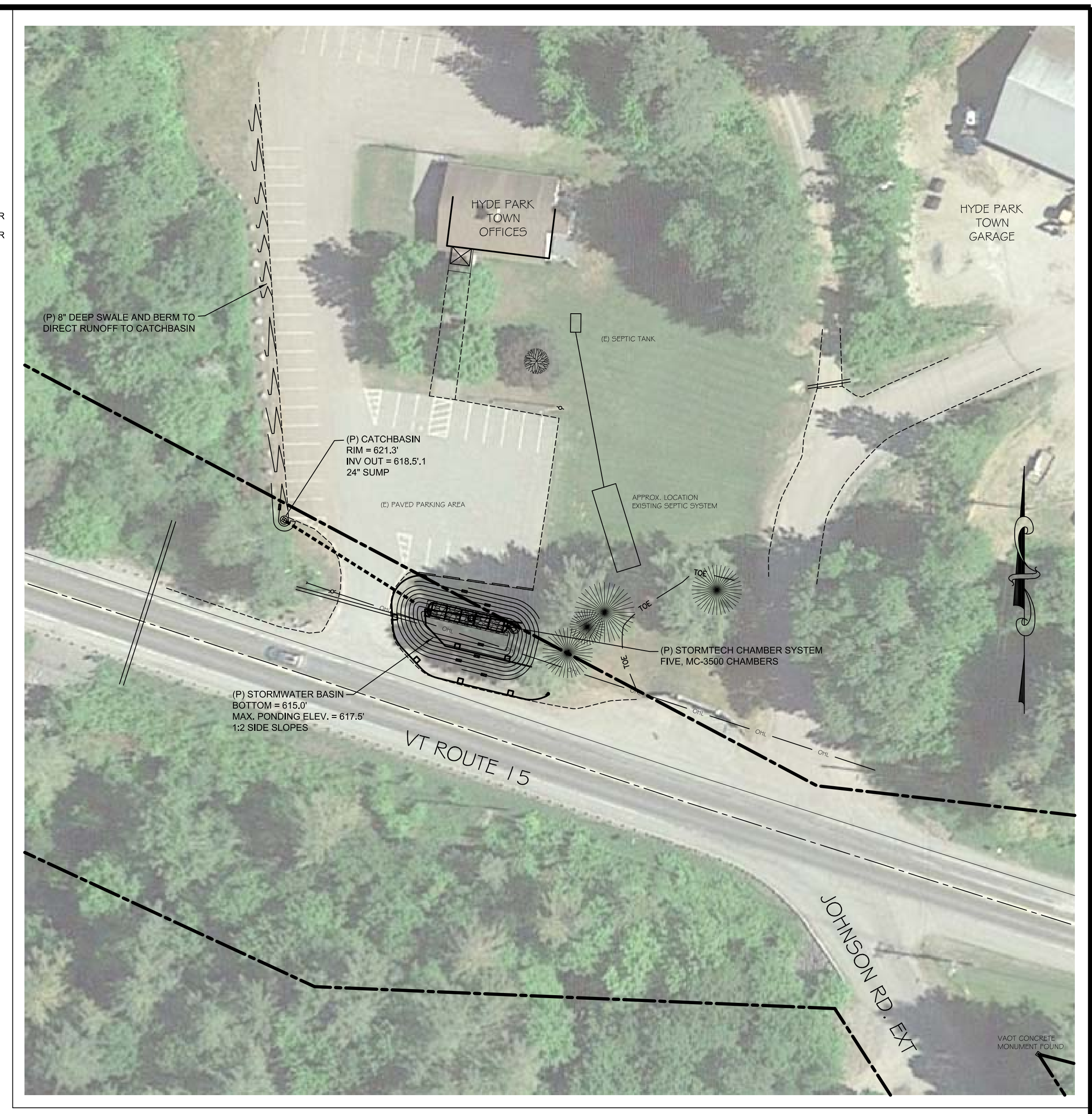
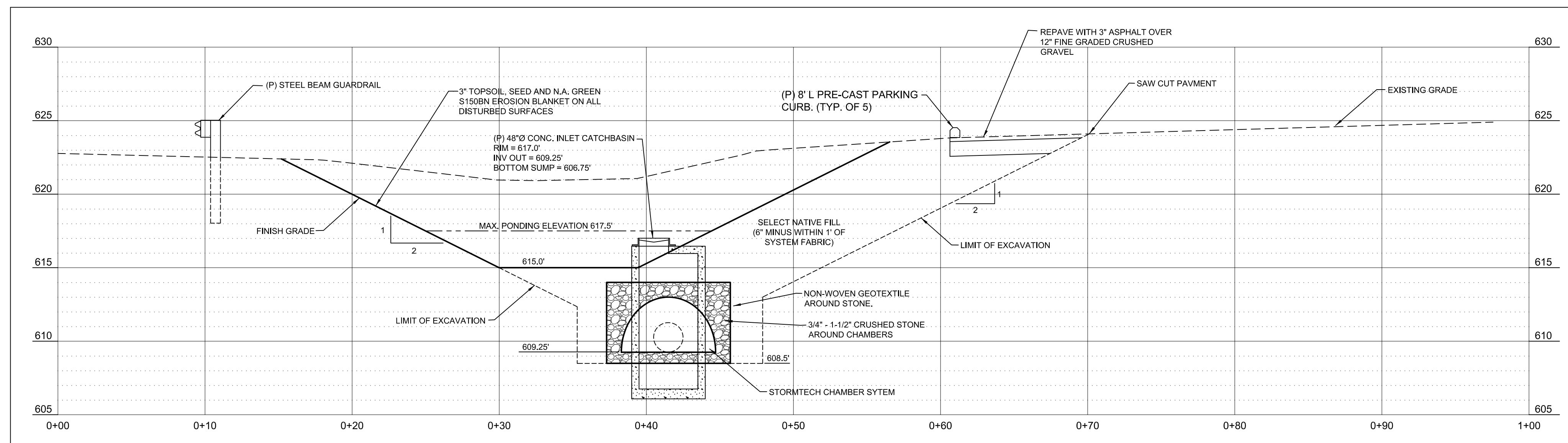


SITE PLAN
SCALE: 1" = 10'

- LEGEND:**
- EXISTING FEATURES**
- ROAD RIGHT OF WAY LINE
 - - - EDGE OF PAVEMENT
 - - - EDGE OF GRAVEL
 - CONCRETE MONUMENT FOUND
 - UTILITY POLE
 - - - - - XXX - - - EXISTING 1-FOOT INTERVAL CONTOUR
 - - - - - XXX - - - EXISTING 5-FOOT INTERVAL CONTOUR
 - - - - - OHL - - - OVERHEAD UTILITY LINE
 - ☼ WHITE PINE TREE
- PROPOSED IMPROVEMENTS**
- CATCHBASIN
 - ▬ STORMDRAIN LINE
 - - - - - XXX - - - FINISH GRADE CONTOUR
 - ▬ STEEL BEAM GUARDRAIL (PER G-10)



OVERALL SITE PLAN/LOCATION MAP
SCALE: 1" = 40'



SECTION A-A
BASIN & CHAMBER SYSTEM
SCALE: 1" = 5' (H&V)

NOTES:

1. THE VERTICAL DATUM SHOWN IS APPROXIMATE NAVD 1988 AS GEOREFERENCED FROM 1-FOOT INTERVAL LIDAR CONTOUR DATA AS PROVIDED BY THE VERMONT CENTER FOR GEOGRAPHIC INFORMATION.
2. CONTOUR DATA IN THE AREA OF THE PROPOSED IMPROVEMENTS IS BASED ON A FIELD SURVEY BY CHASE & CHASE SURVEYORS, OCTOBER, 2018. CONTOUR DATA BEYOND THE SURVEYED LIMITS IS AS PROVIDED BY V.C.G.I.
3. THE LIMITS OF THE ROUTE 15 RIGHT-OF-WAY ARE BASED ON AN ELECTRONIC OVERLAY OF SHEET 14 OF 133 OF PROJECT F-133(4) AS FOUND ON THE VTRANS PLAN DATABASE SERVER, AS HELD ABOUT THE CONCRETE MONUMENT FOUND AT THE EASTERLY INTERSECTION OF THE R.O.W. WITH JOHNSON ROAD EXT. AND ROTATED TO FIT THE OBSERVED CENTERLINE OF ROUTE 15, THIS ALIGNMENT SHALL BE CONSIDERED APPROXIMATE ONLY.

PROPOSED STORMWATER IMPROVEMENTS
TOWN OF HYDE PARK
TOWN CLERK'S OFFICE
ROUTE 100W HYDE PARK, VERMONT

SCALE: AS NOTED DATE: 03/04/19 PROJ.# 2018-120C DWG.# 120C1
DRAWN BY: KKKJ CHECKED BY: AT FB/PG. EPB SHEET C1

WATERSHED
CONSULTING ASSOCIATES, LLC
PO BOX 4413, BURLINGTON, VT (802)497-2367